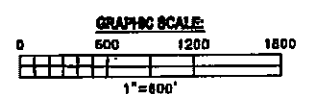


- LEGEND**
- LISTING STREAM
 - ACT 537 PLAN PUBLIC SEWER SERVICE AREA
 - SANITARY SEWER (UNIFORM SIZE)
 - SANITARY SEWER (2" LOW PRESSURE)
 - SANITARY SEWER (2.5" LOW PRESSURE)
 - SANITARY SEWER (3" LOW PRESSURE)
 - SANITARY SEWER (4" LOW PRESSURE)
 - SANITARY SEWER (6" GRAVITY)
 - SANITARY SEWER (12" GRAVITY)
 - SANITARY SEWER (15" GRAVITY)
 - SANITARY SEWER (18" GRAVITY)
 - o SANITARY MANHOLE
 - o MANHOLE LABEL
 - o OPTIONAL SERVICE LABEL
 - 1 = LOW PRESSURE SEWER
 - 2 = MAIN INTERCEPTOR
 - STORM SEWER (OPTIONAL)
 - CHIMNEY SEWER SPIG ON STIM
 - o LOCAL MANHOLE NUMBER
 - BRANCH LINE
 - MAIN TRUNK LINE
 - 1 = DRAINS TO BEAM ROAD WWTP
 - 2 = DRAINS TO BEAM ROAD WWTP
 - 4 = DRAINS TO KRAMER HILL ROAD WWTP
 - 5 = DRAINS TO CEMMAN SCHOOL ROAD WWTP



This document, and the ideas and designs incorporated herein, as an instrument of professional service, is the property of Ebert Engineering, Inc. and is not to be used in whole or part, for any other project without the written authorization of Ebert Engineering, Inc. This is a copy and not the original drawing. Any liability whatsoever is limited to the original drawing or our best relation to the original. Reproductions of this drawing without an embossed engineer's seal are not valid.

Number	Description	Date	Drawn By	Project Engr.	Checked By	Scale	Job No.	Date	Drawing No.
1	ADDED ADDITIONAL ROAD NAMES	05/02/14	EMK	FEE	FEE	AS NOTED	063-001	07/06/12	2 OF 2

GENERAL PLAN OF SANITARY SEWERS - SOUTH SECTION
 FOR THE
NORTHERN LANCASTER COUNTY AUTHORITY
 PREPARED FOR
NORTHERN LANCASTER COUNTY AUTHORITY

Ebert Engineering, Inc.
 Water and Wastewater Engineering
 PO Box 540 Phone (610) 584 8701
 4082 Shippeck Pike, Suite 202 Fax (610) 584 8704
 SAffleck, PA 17474 E-mail: labert@ebertengineering.com

EXISTING PIPING IDENTIFICATION

- ① 8" C.I.P. DISTRIBUTION BOX INFLUENT FROM RAW SEWAGE PUMPS (ABANDON)
- ② 8" C.I.P. PRIMARY CLARIFIER INFLUENT FROM DISTRIBUTION BOX (ABANDON)
- ③ 8" C.I.P. AERATION TANK INFLUENT FROM PRIMARY CLARIFIERS (DEADLUSH)
- ④ 8" C.I.P. PRIMARY CLARIFIER SCUM LINE TO PRIMARY SLUDGE WELL (ABANDON)
- ⑤ 8" C.I.P. PRIMARY SLUDGE LINE TO PRIMARY SLUDGE WELL
- ⑥ 8" C.I.P. RETURN SLUDGE LINE TO AERATION TANK
- ⑦ 8" C.I.P. FROTH SPRAY LINE TO AERATION TANK
- ⑧ 10" C.I.P. FINAL CLARIFIER INFLUENT FROM AERATION TANK
- ⑨ 1 1/2" P.V.C. YARD HYDRANT LINE
- ⑩ 8" C.I.P. FINAL CLARIFIER SLUDGE LINE TO RETURN SLUDGE WELL
- ⑪ 10" C.I.P. FINAL CLARIFIER EFFLUENT TO FILTERS (DEADLUSH)
- ⑫ 8" C.I.P. FINAL CLARIFIER SCUM LINE TO RETURN SLUDGE WELL
- ⑬ 12" C.I.P. FILTER EFFLUENT TO CHLORINE CONTACT TANK
- ⑭ 8" C.I.P. FILTER BACKWASH TO BACKWASH HOLDING TANK
- ⑮ 8" C.I.P. CHLORINE CONTACT DRAIN TO BACKWASH HOLDING TANK
- ⑯ 1" P.V.C. CHLORINE SOLUTION LINE TO CHLORINE CONTACT TANK
- ⑰ 2" P.V.C. POTABLE WATER LINE FROM WELL
- ⑱ 12" C.I.P. EFFLUENT TO MUDDY CREEK
- ⑲ NOT USED
- Ⓐ 8" C.I.P. PROCESS WATER SUCTION FROM CHLORINE CONTACT TANK
- Ⓑ AIR LINES TO AERATION TANK AND SLUDGE BELLS
- Ⓒ 8" C.I.P. PRIMARY & EXCESS SLUDGE DRAIN LINE TO WET WELL (SLOPE 2.0%)
- Ⓓ 8" C.I.P. AERATION TANK DRAIN TO WET WELL (SLOPE 0.5%)
- Ⓔ 3", 4", & 6" C.I.P. BUILDING DRAIN (MIN. SLOPE 1/4" PER FT.)
- Ⓕ 8" C.I.P. OR C.I. STORM WATER DRAIN (MIN. SLOPE 1.0%)
- Ⓖ 12" C.I.P. FILTER BY-PASS LINE TO CHLORINE CONTACT TANK
- Ⓗ 1 1/4" PROCESS WATER
- Ⓘ 2" P.V.C. SLUDGE
- Ⓚ 6" P.V.C. DRAIN
- Ⓛ 1" PROCESS WATER
- Ⓜ 3" P.V.C. SLUDGE
- Ⓨ 4" SLUDGE WITHDRAW (TYP.)

LEGEND (EXISTING)

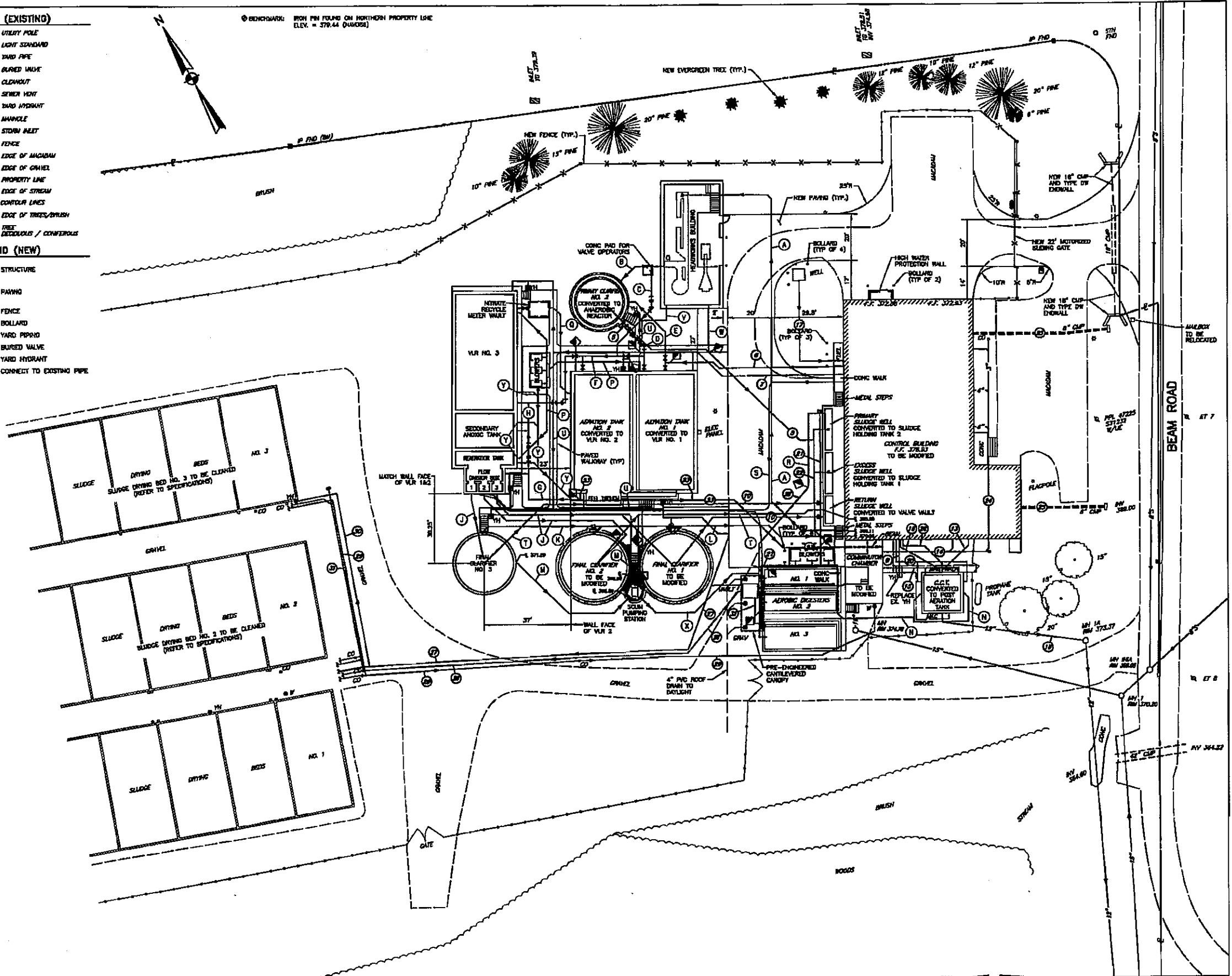
- ⊕ UTILITY POLE
- ⊙ LIGHT STANDARD
- YARD PIPE
- BURIED VALVE
- CLOWNOUT
- SEWER VENT
- YARD HYDRANT
- MANHOLE
- STORM INLET
- FENCE
- EDGE OF MACADAM
- EDGE OF GRAVEL
- PROPERTY LINE
- EDGE OF STREAM
- CONTOUR LINES
- EDGE OF TREES/BURSH
- TREE DECIDUOUS / CONIFERUS

LEGEND (NEW)

- STRUCTURE
- PAVING
- FENCE
- BOLLARD
- YARD PIPING
- BURIED VALVE
- YARD HYDRANT
- CONNECT TO EXISTING PIPE

NEW PIPING IDENTIFICATION

- Ⓐ 8" RAW SEWAGE
- Ⓑ 12" ANAEROBIC REACTOR INFLUENT
- Ⓒ 12" STORM FLOW BYPASS
- Ⓓ 16" VLR INFLUENT
- Ⓔ 8" RETURN ACTIVATED SLUDGE (RAS)
- Ⓕ 16" VLR NO. 1 BYPASS
- Ⓖ 24" VLR NO. 2 EFFLUENT
- Ⓗ 24" VLR NO. 3 INFLUENT
- Ⓙ 10" FINAL CLARIFIER INFLUENT
- Ⓚ 10" FINAL CLARIFIER EFFLUENT
- Ⓛ 12" FINAL CLARIFIER EFFLUENT
- Ⓜ 8" FINAL CLARIFIER SCUM LINE (4% MIN. SLOPE)
- Ⓨ 3" POST AERATION AIR
- Ⓩ (NOT USED)
- Ⓟ 4" VLR AND REAERATION AIR
- Ⓠ 12" VLR NITRATE RECYCLE
- Ⓡ 2" SLUDGE
- Ⓢ ALUM AND POLYMER FEED LINES
- Ⓣ 8" FINAL CLARIFIER SLUDGE LINE
- Ⓤ 3" PROCESS WATER
- Ⓡ 2" PROCESS WATER
- Ⓢ 8" DRAIN (HEADWORKS DUMPSTER AREA)
- Ⓣ 3" SCUM FORCE MAIN
- Ⓤ 6" DRAIN (VLR3/SEC ANOXIC TK/REAERATION TK)



<p>OWNER & PROJECT NORTHERN LANCASTER COUNTY AUTHORITY 883 BEAM ROAD DENVER, PENNSYLVANIA 17517 BEAM ROAD WASTEWATER TREATMENT PLANT BNR UPGRADE BRECKNOCK TOWNSHIP, LANCASTER COUNTY, PA</p>				<p>CLIENT & PROJECT NORTHERN LANCASTER COUNTY AUTHORITY 883 BEAM ROAD DENVER, PENNSYLVANIA 17517 BEAM ROAD WASTEWATER TREATMENT PLANT BNR UPGRADE BRECKNOCK TOWNSHIP, LANCASTER COUNTY, PA</p>		<p>ARRC ENGINEERING & DESIGN-ARCHITECT CONSULTANTS 108 West Airport Road Lancaster, Pennsylvania 17603 Tel 717.588.7021</p>		<p>CIVIL YARD PIPING PLAN SCALE 1" = 30' SHEET NO. 5 OF 75 PROJECT NO. 07079.00 DATE 03-20-10</p>	
<p>DESIGNER CIVIL ENGINEER M.D. WOFFEL, P.E. DATE NOVEMBER 2010</p>				<p>CHECKER CIVIL ENGINEER DATE</p>		<p>DATE NOVEMBER 2010</p>		<p>NO. OF SHEETS 75</p>	